

2026

MODULAR **DISPLAYS**





Add-Ons TRIGA® GO MODULAR ACCESSORIES



Prime LED
Light Kit



Hard case with
two wheels

Prime LED Light Kit

| Item # | Description | 1 | 2-5 | 6-11 | 12-24 |
|--------|------------------|--------|--------|--------|--------|
| 150133 | Single Light Kit | 187.50 | 181.80 | 176.20 | 170.60 |

Pricing is subject to change.

Kit Includes: Light and Soft Carry Case

USD MSRP (C)

Hardware Lead Time: Ships same day when ordered before 2 p.m. Central

Modular Hard Case

| Item # | Description | 1 | 2-5 | 6-11 | 12-24 |
|--------|----------------------------|--------|--------|--------|--------|
| 220397 | Hard Case with Two Wheels | 434.50 | 421.50 | 408.50 | 395.50 |
| 220398 | Hard Case with Four Wheels | 599.50 | 581.50 | 563.50 | 545.50 |

Pricing is subject to change.

USD MSRP (C)

Hardware Lead Time: Ships same day when ordered before 2 p.m. Central

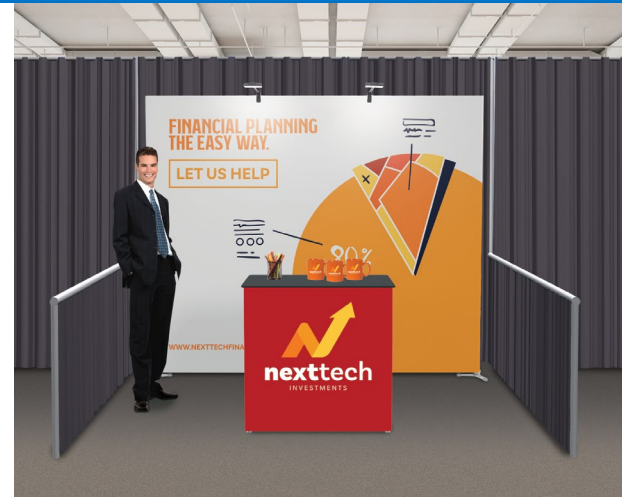
PRICES ARE SUBJECT TO CHANGE. No setup fee on orders placed via our website.
Visit showdowndisplays.com for current pricing, graphic templates, product videos and assembly instructions.

showdowndisplays.com

TRIGA® GO MODULAR DISPLAY SYSTEM

The TRIGA® Go modular display system is a lightweight, portable display solution designed for easy setup and customization. It offers a sleek and professional presence for trade shows, events, and brand activations.

- Modular design allows you to expand and modify into various configurations
- Combine with other TRIGA® Go components to craft a highly adaptable and visually striking display (sold separately)
- Innovative fabric tension poles ensure a wrinkle-free finish
- One-piece wraparound graphic provides a polished look
- Available in single- and double-sided options
- Artwork is dye sublimated on recycled polyester knit
- 100% recycled media is made with fibers recycled from plastic bottles
- Compact and lightweight
- Packs flat for easy transport
- Tool-free assembly
- Warranties range between two and three years (see website for details)
- Booth kits are not eligible for Rush Service



Graphic simply slides into grooves on the top and bottom rails.



Easily connect horizontal rails to vertical poles.



Join the top and bottom poles by turning the connector to the lock position.



Corner braces provide added stability to your display.

PRICES ARE SUBJECT TO CHANGE. No setup fee on orders placed via our website.
Visit showdowndisplays.com for current pricing, graphic templates, product videos and assembly instructions.
showdowndisplays.com



our high-end, long-term
MODULAR DISPLAY

PRICES ARE SUBJECT TO CHANGE. No setup fee on orders placed via our website.
Visit showdowndisplays.com for current pricing, graphic templates, product videos and assembly instructions.
showdowndisplays.com



TRIGA® Go Wall (Single-Sided)

| Item # | Description | 1 | 2-5 | 6-11 | 12-24 |
|--------|-------------|---------|---------|---------|---------|
| 255400 | 3'W Kit | 709.00 | 680.50 | 652.00 | 623.50 |
| 255405 | 6'W Kit | 1360.00 | 1306.00 | 1251.00 | 1197.00 |
| 255410 | 10'W Kit | 1767.00 | 1696.00 | 1625.00 | 1555.00 |
| 255415 | 20'W Kit | 3338.00 | 3204.00 | 3071.00 | 2937.00 |

Setup fee: \$20(G)

3'-10'W Kit Includes: Hardware, Graphic Panel and Soft Carry Case
20'W Kit Includes: Hardware, Graphic Panel and 2 Soft Carry Cases

Pricing is subject to change.

USD MSRP (C)

TRIGA® Go Wall (Double-Sided)

| Item # | Description | 1 | 2-5 | 6-11 | 12-24 |
|--------|-------------|---------|---------|---------|---------|
| 255401 | 3'W Kit | 791.50 | 759.50 | 728.00 | 696.50 |
| 255406 | 6'W Kit | 1525.00 | 1464.00 | 1403.00 | 1342.00 |
| 255411 | 10'W Kit | 1987.00 | 1907.00 | 1828.00 | 1748.00 |
| 255416 | 20'W Kit | 3778.00 | 3626.00 | 3475.00 | 3324.00 |

Setup fee: \$20(G)

3'-10'W Kit Includes: Hardware, Graphic Panel and Soft Carry Case
20'W Kit Includes: Hardware, Graphic Panel and 2 Soft Carry Cases

Pricing is subject to change.

USD MSRP (C)

| Description | Product Size | Finished Graphic Size | Product Wt. (Single / Double) | Media |
|-------------|-------------------------------|-----------------------|-------------------------------|-------------------------|
| 3'W | 43"W x 96.25"H x 12.875"D | view online template | 15.8 lbs. / 17.2 lbs. | recycled polyester knit |
| 6'W | 80.5"W x 96.25"H x 12.875"D | view online template | 27.8 lbs. / 30.6 lbs. | recycled polyester knit |
| 10'W | 118.5"W x 96.25"H x 12.875"D | view online template | 33.2 lbs. / 37.4 lbs. | recycled polyester knit |
| 20'W | 230.25"W x 96.25"H x 12.875"D | view online template | 67.9 lbs. / 76.3 lbs. | recycled polyester knit |

Production Lead Time: 4 days from final proof approval

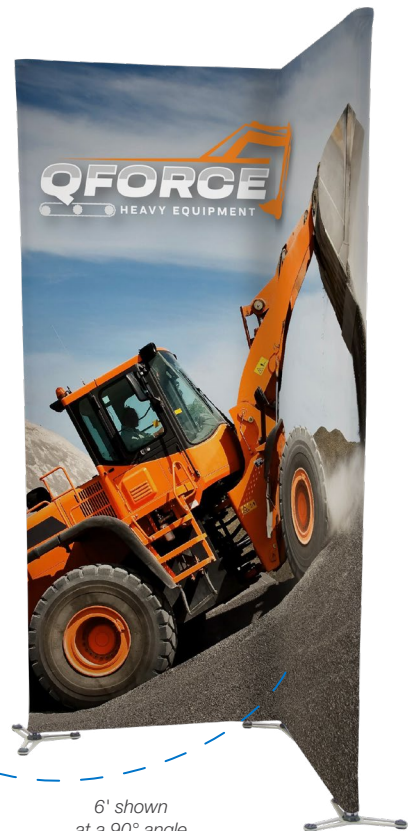


Single-sided graphic wraps partially around the frame for a seamless front view.



Double-sided graphic has a partial overlap on the backside.

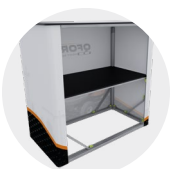
6', 10' and 20' walls can be angled 90° at any interior vertical pole, allowing you to create unique shapes with the same graphic across the display.



6' shown at a 90° angle

PRICES ARE SUBJECT TO CHANGE. No setup fee on orders placed via our website.
Visit showdowndisplays.com for current pricing, graphic templates, product videos and assembly instructions.

showdowndisplays.com



20" countertop and internal shelf supports up to 50 lbs.; 38" and 79" countertop and internal shelves support up to 100 lbs.



TRIGA® Go Counter

| Item # | Description | 1 | 2-5 | 6-11 | 12-24 |
|--------|-------------|---------|---------|---------|---------|
| 255450 | 20"W Kit | 1250.00 | 1200.00 | 1150.00 | 1100.00 |
| 255453 | 38"W Kit | 1534.00 | 1472.00 | 1411.00 | 1350.00 |
| 255456 | 79"W Kit | 2555.00 | 2453.00 | 2351.00 | 2248.00 |

Setup fee: \$20(G)

Pricing is subject to change.

20" & 38"W Kit Includes: Hardware, Graphic Panel and 2 Soft Carry Cases

79"W Kit Includes: Hardware, Graphic Panel and 3 Soft Carry Cases

USD MSRP (C)

| Description | Product Size | Finished Graphic Size | Product Wt. | Media |
|-------------|--------------------------|-----------------------|-------------|-------------------------|
| 20"W | 23.5"W x 40"H x 23.5"D | view online template | 36.4 lbs. | recycled polyester knit |
| 38"W | 41.125"W x 40"H x 23.5"D | view online template | 52.75 lbs. | recycled polyester knit |
| 79"W | 78.625"W x 40"H x 23.5"D | view online template | 92 lbs. | recycled polyester knit |

Production Lead Time: 4 days from final proof approval



10'



20'

TRIGA® Go U-Booth

| Item # | Description | 1 | 2-5 | 6-11 | 12-24 |
|--------|-------------|---------|---------|---------|---------|
| 255430 | 10'W Kit | 2993.00 | 2873.00 | 2753.00 | 2633.00 |
| 255433 | 20'W Kit | 4630.00 | 4445.00 | 4260.00 | 4074.00 |

Setup fee: \$20(G)

Pricing is subject to change.

10'W Kit Includes: Hardware, Graphic Panel and 2 Soft Carry Cases

20'W Kit Includes: Hardware, Graphic Panel and 3 Soft Carry Cases

USD MSRP (C)

| Description | Product Size | Finished Graphic Size | Product Wt. | Media |
|-------------|-----------------------------|-----------------------|-------------|-------------------------|
| 10'W | 119.75"W x 96.25"H x 42.5"D | view online template | 50.3 lbs. | recycled polyester knit |
| 20'W | 231.5"W x 96.25"H x 42.5"D | view online template | 93 lbs. | recycled polyester knit |

Production Lead Time: 4 days from final proof approval

PRICES ARE SUBJECT TO CHANGE. No setup fee on orders placed via our website. Visit showdowndisplays.com for current pricing, graphic templates, product videos and assembly instructions.

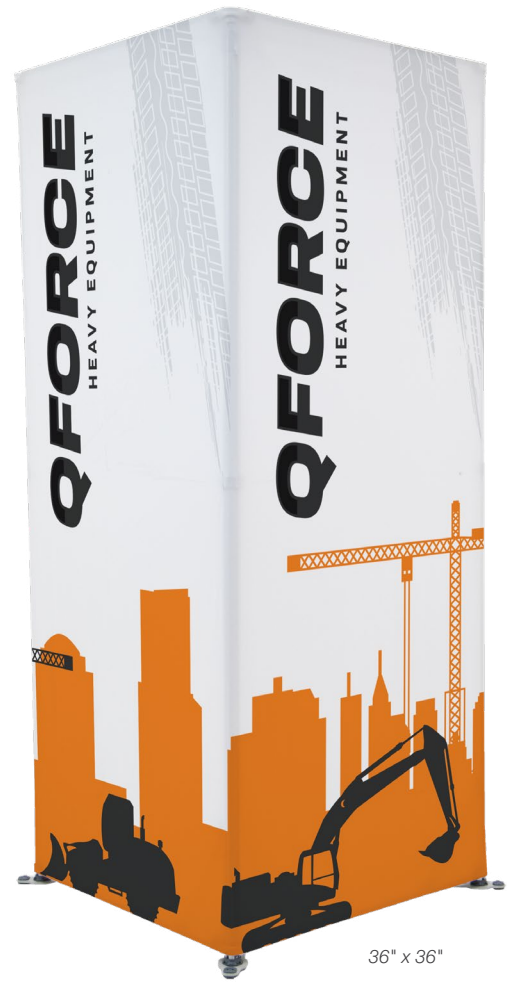
showdowndisplays.com



20" x 20"



36" x 20"



36" x 36"

TRIGA® Go Towers

| Item # | Description | 1 | 2-5 | 6-11 | 12-24 |
|--------|---------------|---------|---------|---------|---------|
| 255500 | 20" x 20" Kit | 1900.00 | 1824.00 | 1748.00 | 1672.00 |
| 255503 | 36" x 20" Kit | 2100.00 | 2016.00 | 1932.00 | 1848.00 |
| 255506 | 36" x 36" Kit | 2230.00 | 2141.00 | 2052.00 | 1962.00 |

Setup fee: \$20(G)

Pricing is subject to change.

Kit Includes: Hardware, Graphic Panel and Soft Carry Case

USD MSRP (C)

| Description | Product Size | Finished Graphic Size | Product Wt. | Media |
|-------------|---------------------------|-----------------------|-------------|-------------------------|
| 20" x 20" | 24.5"W x 96.25"H x 24.5"D | view online template | 30 lbs. | recycled polyester knit |
| 36" x 20" | 42"W x 96.25"H x 24.5"D | view online template | 33 lbs. | recycled polyester knit |
| 36" x 36" | 42"W x 96.25"H x 42"D | view online template | 36 lbs. | recycled polyester knit |

Production Lead Time: 4 days from final proof approval



Keep a smaller footprint by displaying with feet pointing towards the inside of the tower.

PRICES ARE SUBJECT TO CHANGE. No setup fee on orders placed via our website. Visit showdowndisplays.com for current pricing, graphic templates, product videos and assembly instructions.

showdowndisplays.com



Monitor mount securely attaches to poles; max monitor size of 50" (monitor not included).

Shown on 6'W TRIGA Go® wall (sold separately)

TRIGA® Go Monitor Mount

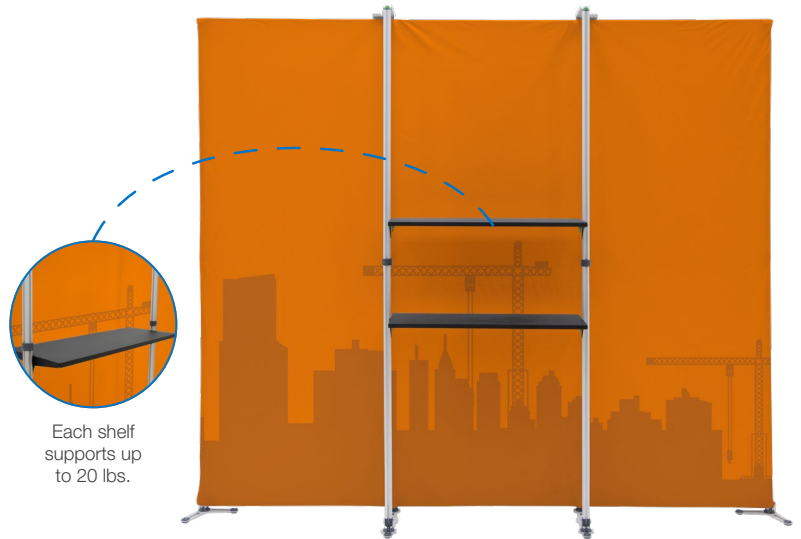
| Item # | Description | Product Wt. | 1 | 2-5 | 6-11 | 12-24 |
|--------|-------------|-------------|--------|--------|--------|--------|
| 255472 | Kit | 9.5 lbs. | 727.50 | 698.50 | 669.50 | 640.00 |

Pricing is subject to change.

Kit Includes: 2 Poles and Monitor Mount
Max monitor size of 50" or 25 lbs. (monitor not included).

USD MSRP (C)

Hardware Lead Time: Ships same day when ordered before 2 p.m. Central



Each shelf supports up to 20 lbs.

Shown on 10'W TRIGA Go® wall (sold separately)

TRIGA® Go Shelf

| Item # | Description | Product Wt. | 1 | 2-5 | 6-11 | 12-24 |
|--------|-------------|-------------|--------|--------|--------|--------|
| 255471 | Kit | 19 lbs. | 770.00 | 739.00 | 708.50 | 677.50 |

Pricing is subject to change.

Kit Includes: 2 Poles and 2 Shelves
Each shelf supports up to 20 lbs. Shelf size 36.25"W x 13.75"D.

USD MSRP (C)

Hardware Lead Time: Ships same day when ordered before 2 p.m. Central



NEW
PRODUCT

Apparel bars easily attach to poles and each bar supports up to 35 lbs.

Shown on 10'W TRIGA Go® wall (sold separately)

TRIGA® Go Apparel Bar

| Item # | Description | Product Wt. | 1 | 2-5 | 6-11 | 12-24 |
|--------|-------------|-------------|--------|--------|--------|--------|
| 255468 | Kit | 14 lbs. | 575.00 | 552.00 | 529.00 | 506.00 |

Pricing is subject to change.

Kit Includes: 2 Poles and 2 Apparel Hanging Bars
Each bar supports up to 35 lbs.

USD MSRP (C)

Hardware Lead Time: Ships same day when ordered before 2 p.m. Central



Each waterfall hanger supports up to 10 lbs.

Shown on 6'W TRIGA Go® wall (sold separately)

TRIGA® Go Waterfall Hanger

| Item # | Description | Product Wt. | 1 | 2-5 | 6-11 | 12-24 |
|--------|-------------|-------------|--------|--------|--------|--------|
| 255470 | Kit | 2.8 lbs. | 297.00 | 285.00 | 273.25 | 261.25 |

Pricing is subject to change.

Kit Includes: Pole and 2 Waterfall Hangers
Each hanger supports up to 10 lbs.

USD MSRP (C)

Hardware Lead Time: Ships same day when ordered before 2 p.m. Central

PRICES ARE SUBJECT TO CHANGE. No setup fee on orders placed via our website.
Visit showdowndisplays.com for current pricing, graphic templates, product videos and assembly instructions.

showdowndisplays.com



TRIGA® Go Modular Booth Kit 1

| Item # | Description | 1 | 2-5 | 6-11 | 12-24 |
|--------|-------------|---------|---------|---------|---------|
| 255550 | Kit | 3884.00 | 3743.00 | 3580.00 | 3439.00 |

Setup fee: \$20(G)

Pricing is subject to change.

Kit Includes: Hardware, 2 Graphic Panels,
2 Prime LED Light Kits and 6 Soft Carry Cases

USD MSRP (C)

Production Lead Time: 6 days from final proof approval



TRIGA® Go Modular Booth Kit 2

| Item # | Description | 1 | 2-5 | 6-11 | 12-24 |
|--------|-------------|----------|---------|---------|---------|
| 255551 | Kit | 10275.00 | 9990.00 | 9455.00 | 9170.00 |

Setup fee: \$20(G)

Pricing is subject to change.

Kit Includes: Hardware, Monitor Mount, 4 Graphic Panels,
4 Prime LED Light Kits and 11 Soft Carry Cases

USD MSRP (C)

Production Lead Time: 6 days from final proof approval



TRIGA® Go Modular Booth Kit 3

| Item # | Description | 1 | 2-5 | 6-11 | 12-24 |
|--------|-------------|---------|---------|---------|---------|
| 255552 | Kit | 6485.00 | 6335.00 | 5965.00 | 5815.00 |

Setup fee: \$20(G)

Pricing is subject to change.

Kit Includes: Hardware, 3 Graphic Panels, Monitor Mount,
2 Prime LED Light Kits and 8 Soft Carry Cases

USD MSRP (C)

Production Lead Time: 6 days from final proof approval



TRIGA® Go Modular Booth Kit 4

| Item # | Description | 1 | 2-5 | 6-11 | 12-24 |
|--------|-------------|----------|---------|---------|---------|
| 255553 | Kit | 10070.00 | 9850.00 | 9260.00 | 9040.00 |

Setup fee: \$20(G)

Pricing is subject to change.

Kit Includes: Hardware, 3 Graphic Panels, Monitor Mount,
2 Shelves, 4 Prime LED Light Kits and 11 Soft Carry Cases

USD MSRP (C)

Production Lead Time: 6 days from final proof approval

did you know
**WE SELL THESE
 PRODUCTS TOO?**



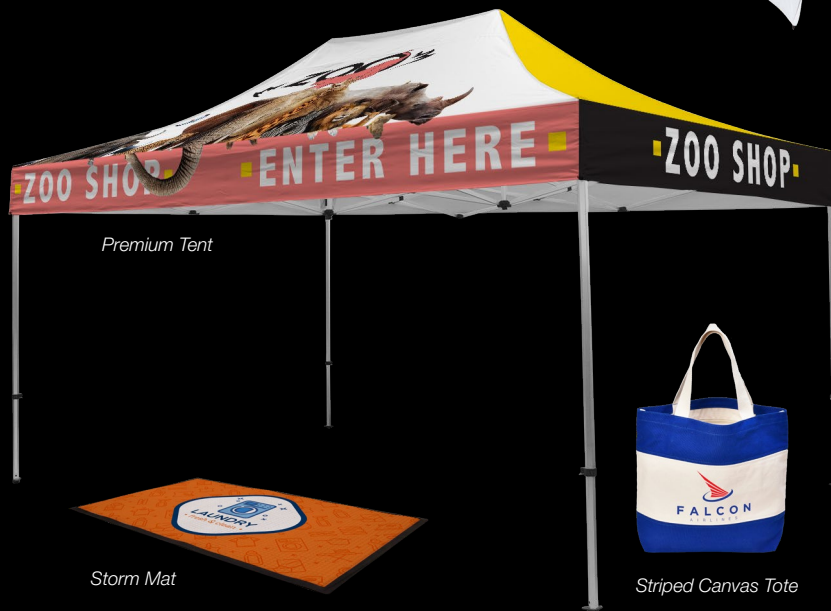
Gale Force Golf
 Umbrella



Elm Street
 Bar Cart



Flex Tote



Premium Tent

Striped Canvas Tote



Lightweight Table throw



Storm Mat



45L Cool Bar



Wood Cornhole



Stainless Steel Fire Pit



Rocker Chair



St. Tropez
 Market Umbrella



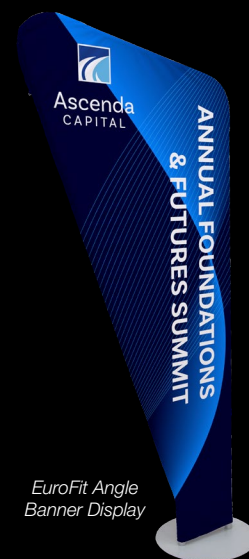
Plaza
 Retractor



TrashWorks Wrap



Collapsible Counter



EuroFit Angle
 Banner Display